

# Oxford City Planning Committee Presentation

**Reference Number: 24/01821/FUL**

3

**Site Address: Department of  
Physiology (Sherrington Building)**

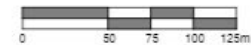
[www.oxford.gov.uk](http://www.oxford.gov.uk)



# Site Location Plan



1 Site Location Plan  
1:1250



[www.oxford.gov.uk](http://www.oxford.gov.uk)



**OXFORD  
CITY  
COUNCIL**



# Front Elevation



[www.oxford.gov.uk](http://www.oxford.gov.uk)



# Rear Elevation from University Parks



9

[www.oxford.gov.uk](http://www.oxford.gov.uk)



**OXFORD  
CITY  
COUNCIL**



# Longer Range Views from University Parks

[www.oxford.gov.uk](http://www.oxford.gov.uk)

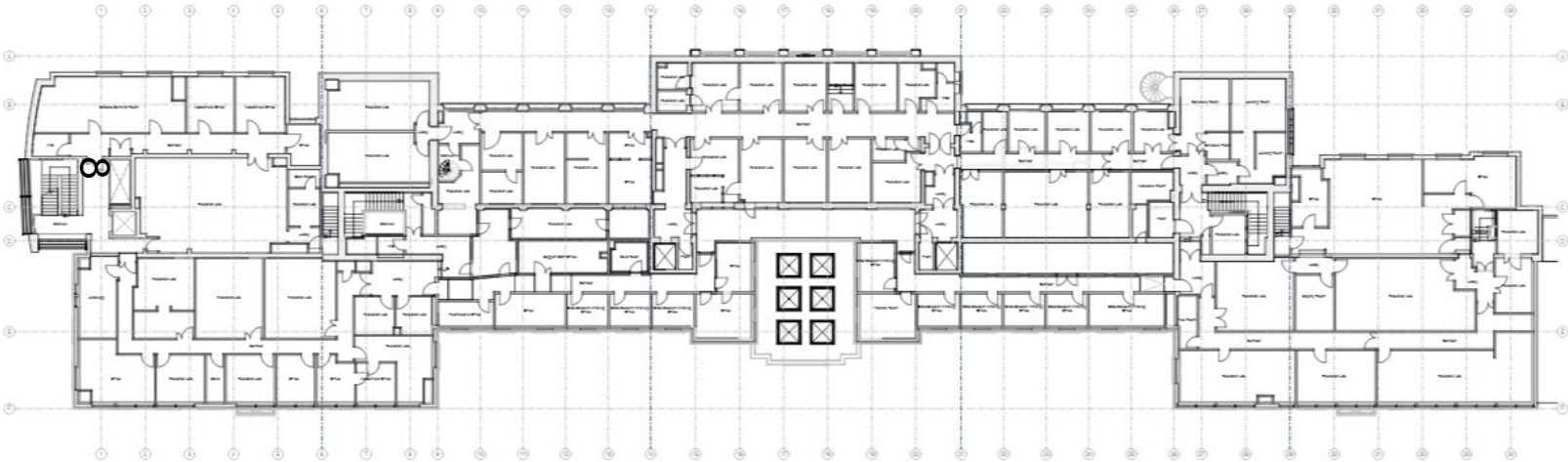


# Existing Floor Plans

[www.oxford.gov.uk](http://www.oxford.gov.uk)



## Third Floor

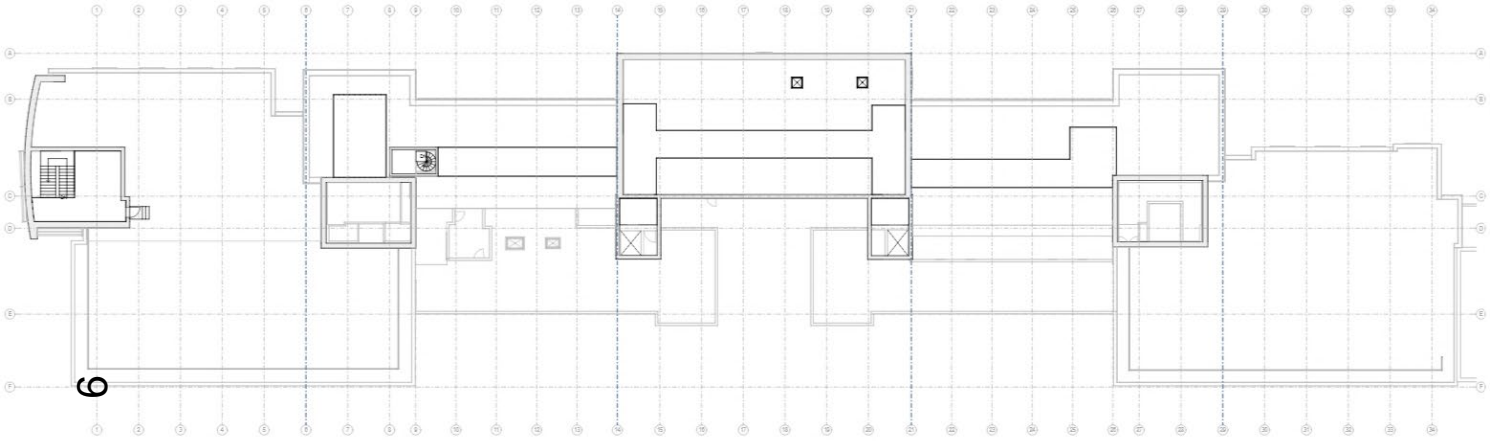


03 - Third Floor Plan GA  
1:100



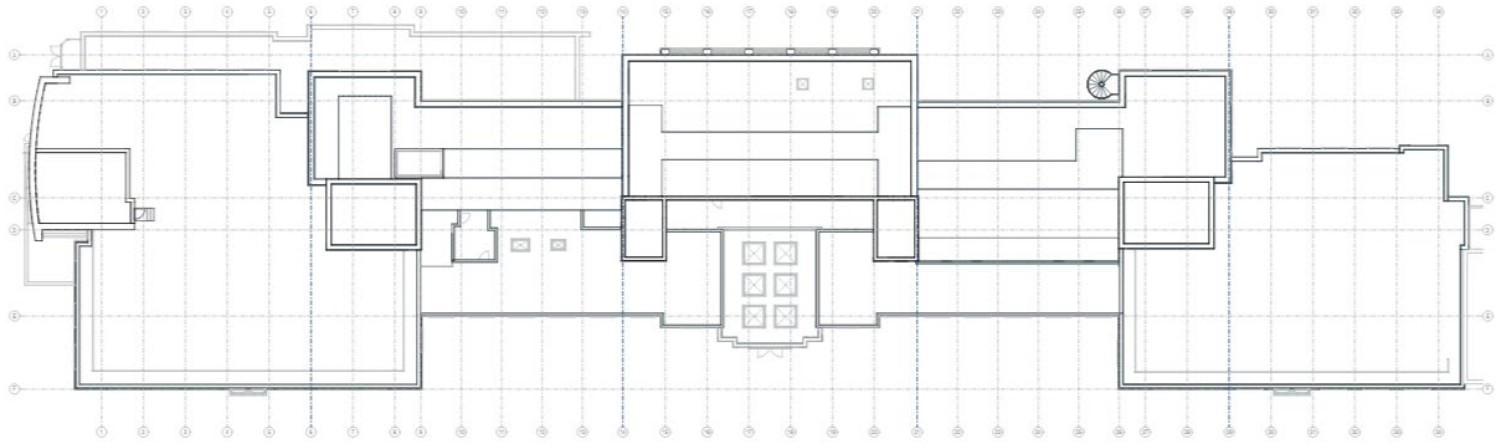
# Existing Floor Plans

## Fourth Floor



04 - Fourth Floor / Roof Plan GA  
1:100

## Roof



05 - Roof Plan GA  
1:100

[www.oxford.gov.uk](http://www.oxford.gov.uk)



# Existing Elevations



1 North Elevation Existing  
1 : 200



2 South Elevation Existing  
1 : 200



3 East Elevation Existing  
1 : 200

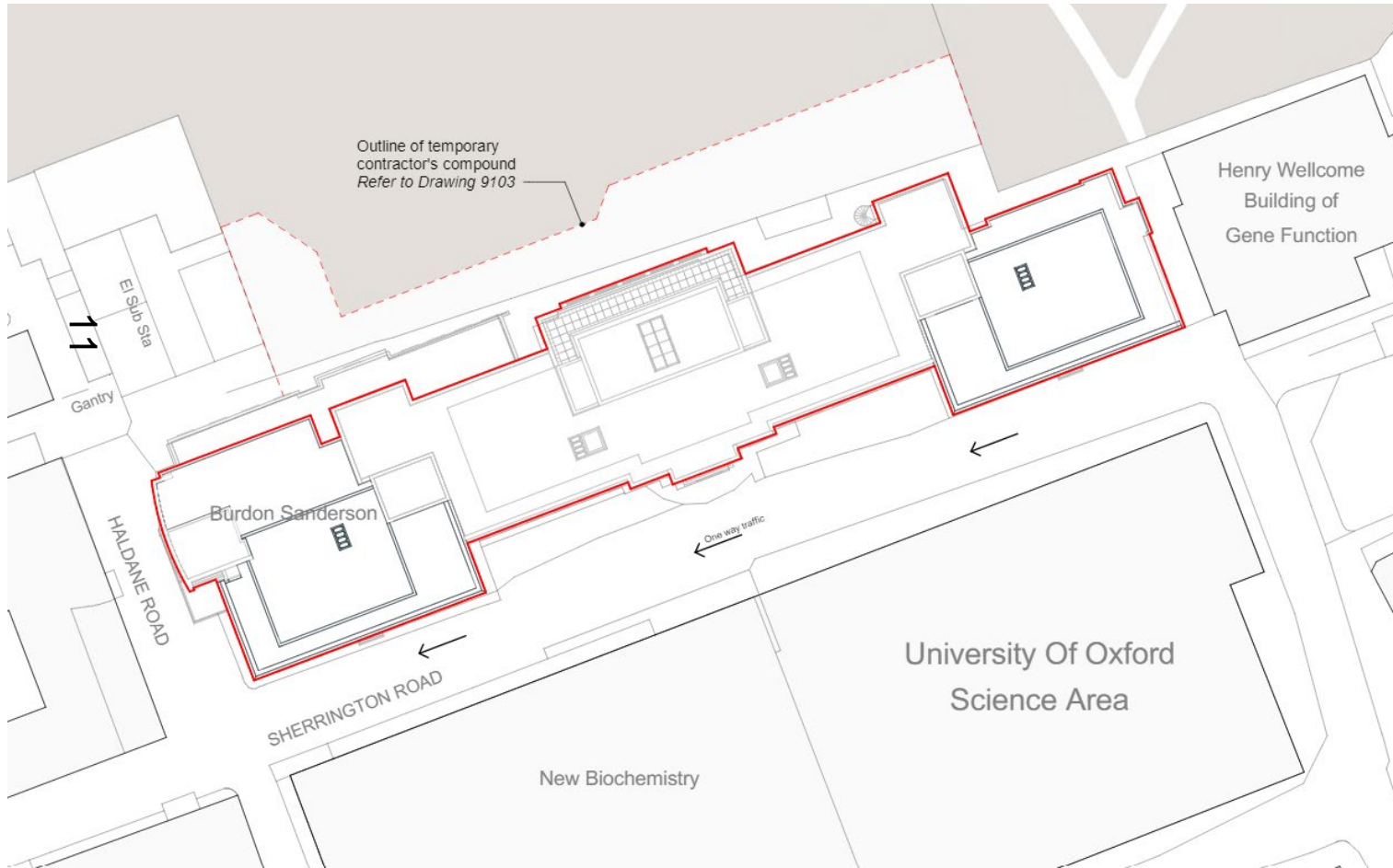


4 West Elevation Existing  
1 : 200





# Proposed Site Plan

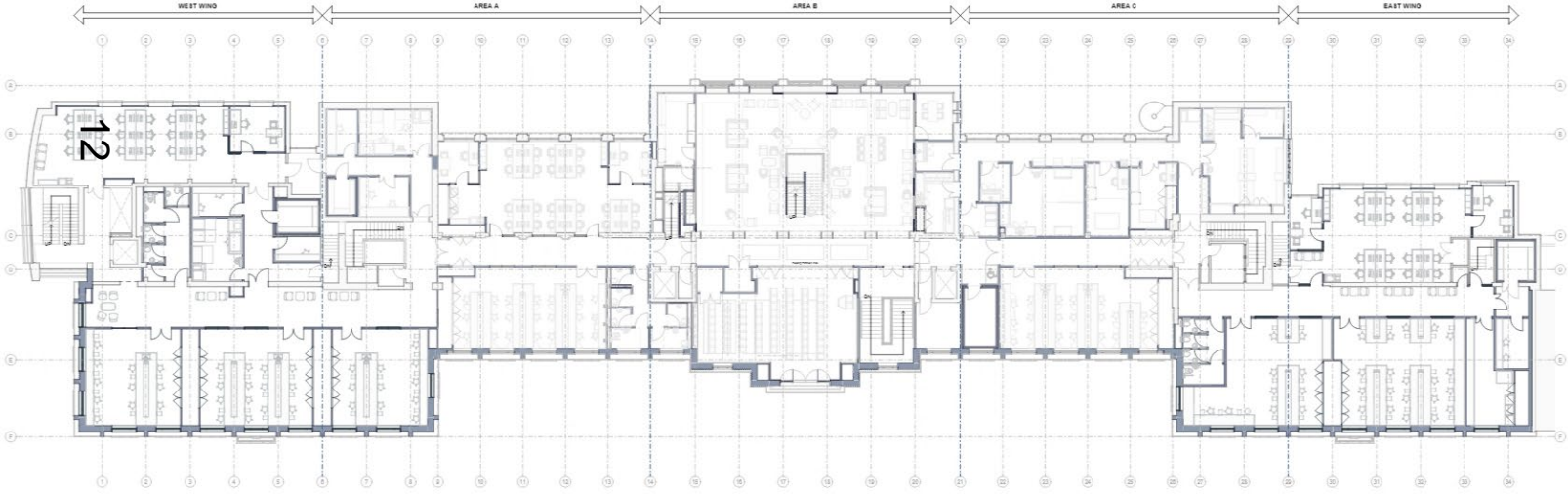


[www.oxford.gov.uk](http://www.oxford.gov.uk)



# Proposed Floor Plans

## Third Floor

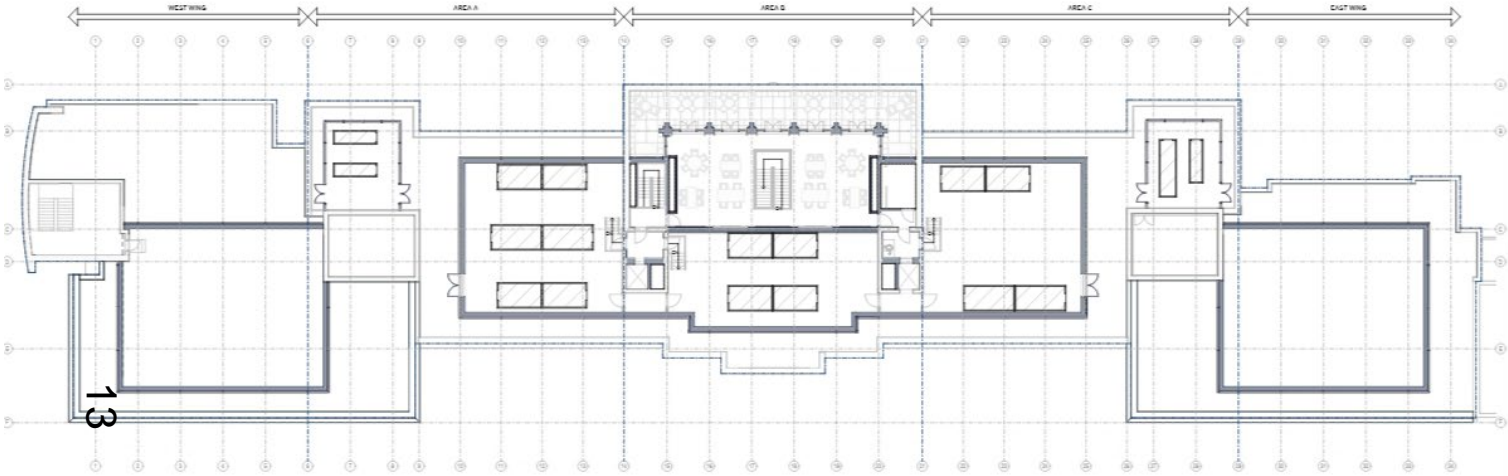


03 - Third Floor Plan Proposed GA Phase 2  
1:100



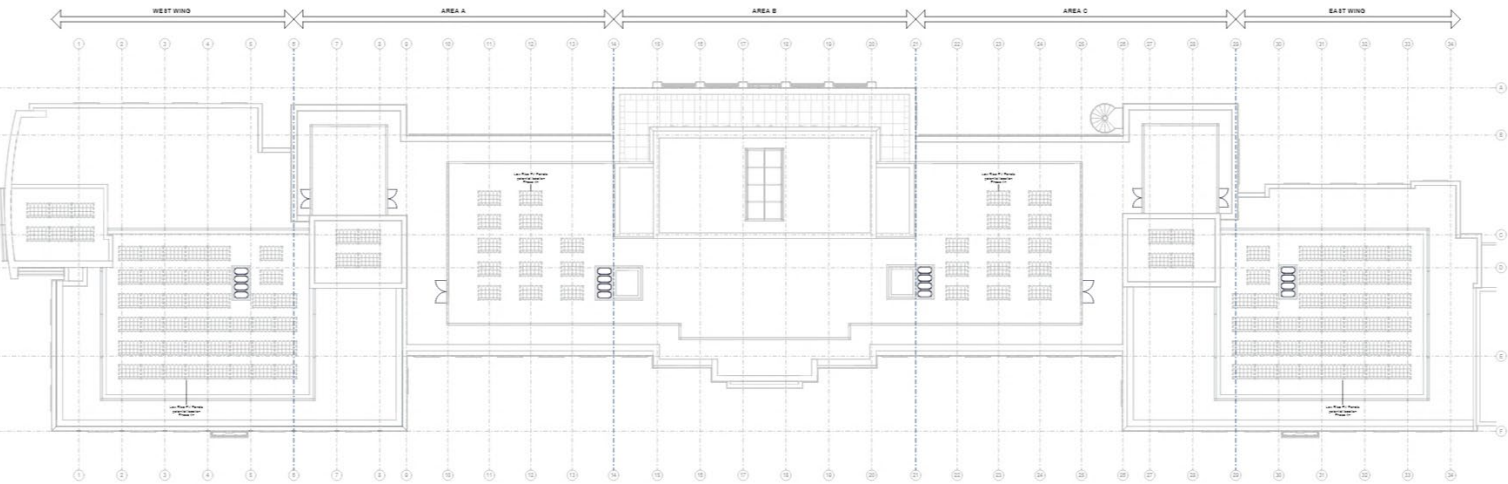
# Proposed Floor Plans

## Fourth Floor



04- Fourth Floor Plan Proposed GA Phase 2  
1:100

## Roof



05- Roof Proposed GA Phase 2  
1:100

[www.oxford.gov.uk](http://www.oxford.gov.uk)



# Proposed Elevations



1 North Elevation Proposed  
1:200



2 South Elevation Proposed  
1:200



3 East Elevation Proposed  
1:200



4 West Elevation Proposed  
1:200



# Proposed Visuals



[www.oxford.gov.uk](http://www.oxford.gov.uk)



**OXFORD  
CITY  
COUNCIL**



# Proposed Visuals



16



[www.oxford.gov.uk](http://www.oxford.gov.uk)



# Proposed Visuals

## View From Carfax



[www.oxford.gov.uk](http://www.oxford.gov.uk)



This page is intentionally left blank